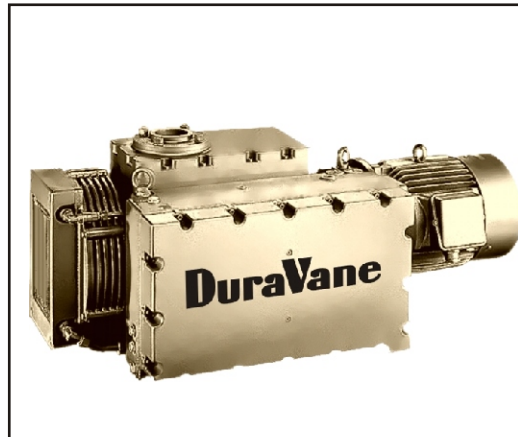


DuraVane lubricated rotary vane pumps are single-stage pumps with an integrated closed loop oil recirculation system.

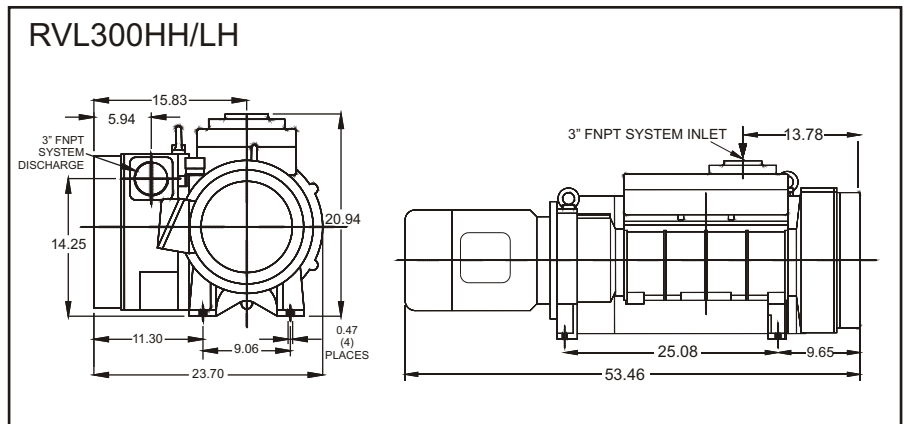
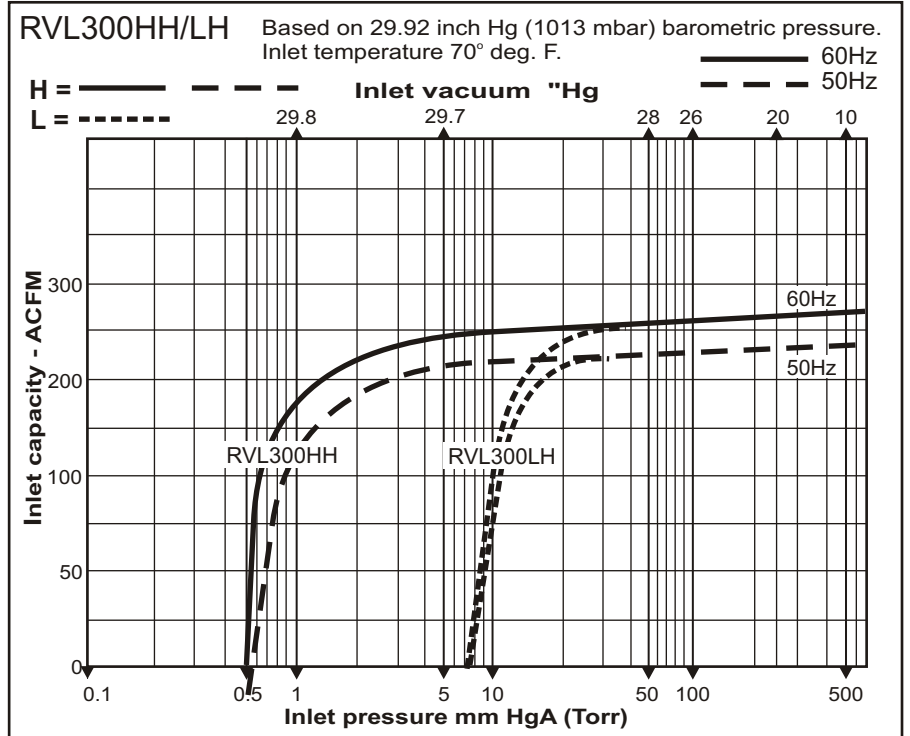
- Heavy duty construction.
- Compact design, small footprint.
- High-tech vane material provides long vane life.
- Low noise level.
- Low maintenance.
- Air-cooled design.
- Internally mounted inlet check valve and filter.
- High efficiency multi-stage exhaust filter removes 99.9% of exhaust smoke.
- Direct drive.
- Simple to install.



Performance characteristics

Displacement:	280CFM
Final pressure:	0.5/15Torr
Motor 50Hz:	10HP/7.5kW
Motor 60Hz:	15HP/11kW
Voltage:	230/380/460V/3phase
Speed 50Hz:	1450RPM
Speed 60Hz:	1800RPM
Noise level(at 3ft):	80dBA
Oil reservoir cap.:	11qt
Oil type:	Duratex 100
Weight:	740lbs
Inlet conn.:	3"NPT
Discharge conn.:	3"NPT

*For continuous operation from 300-0.5Torr select RVL300HH.
For continuous operation from 500-15Torr select RVL300LH*



Information contained in this document is for reference only. Subject to change without notice.