

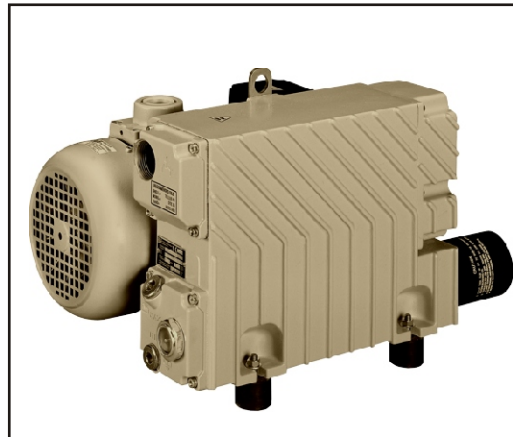
9. ROTARY VANE PUMPS

DuraVane

Lubricated rotary vane pump
for saturated air (wet) service
RVL050W

DuraVane lubricated rotary vane pumps for saturated air (wet) service are specifically developed for applications with a high level of inlet water vapor. Standard lubricated pumps would not operate successfully under these conditions.

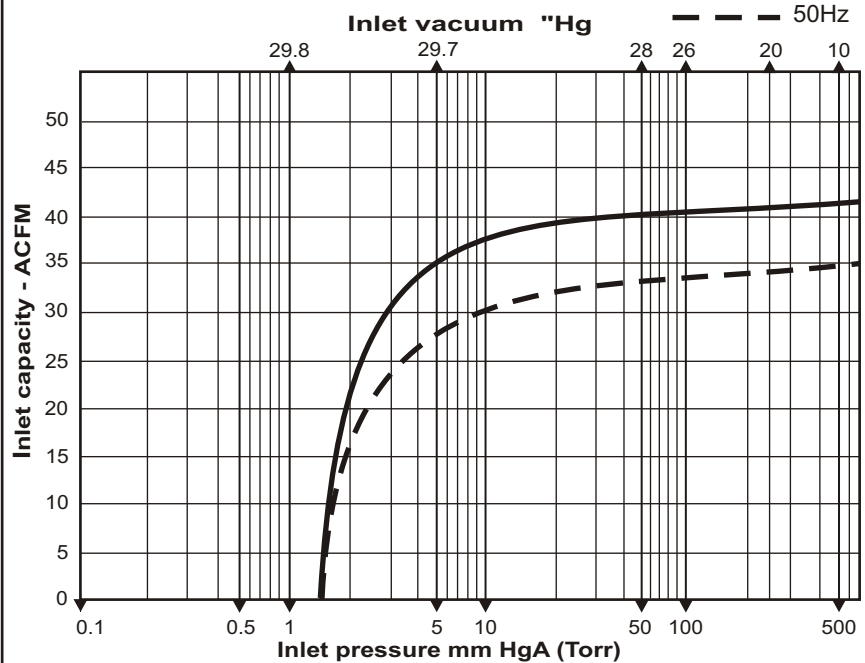
- Heavy duty construction.
- Oil/water separator with condensate drain valve.
- High oil level switch.
- Compact design, small footprint.
- High-tech vane material provides long vane life.
- Air-cooled design.
- Internally mounted inlet check valve.
- High efficiency multi-stage exhaust filter removes 99.9% of exhaust smoke.
- Direct drive.
- Simple to install.
- High level switch included.



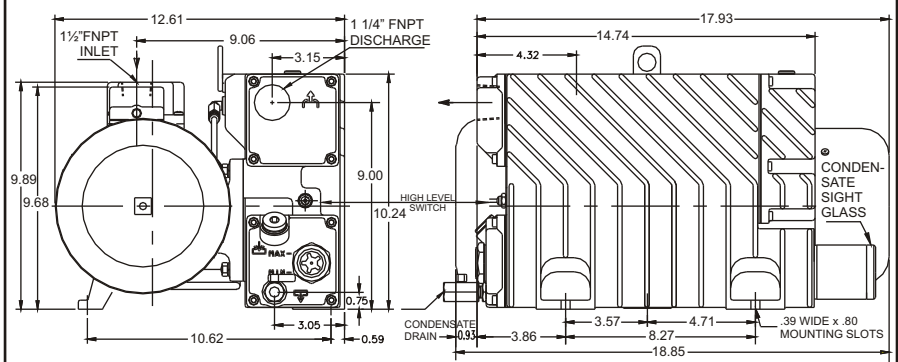
Performance characteristics	
Displacement:	45CFM
Final pressure:	1.5Torr
Motor 50Hz:	2HP TEFC
Motor 60Hz:	3HP TEFC
Voltage:	208/230/460V/3phase
Speed:	1450/1800RPM
Noise level(at 3ft):	69dBA
Oil reservoir cap.:	1.6qt
Oil type:	Duratex 68
Weight:	118Lbs
Inlet conn.:	1-1/2"NPT
Discharge conn.:	1-1/4"NPT
<i>Suitable for continuous operation in a pressure range from 450-1.5 Torr.</i>	

RVL050W

Based on 29.92 inch Hg (1013 mbar) barometric pressure.
Inlet temperature 70° deg. F.



RVL050W



Information contained in this document is for reference only. Subject to change without notice.